

**HUGHES**



**HUGHES-SAFETY.COM**

# **THE SAFETY SHOWERS CATALOG**

emergency safety showers · eyewash · decontamination showers

# introduction

Hughes Safety Showers is located in North America, supplying our comprehensive range of Emergency Safety Showers, Eyewash Units and Decontamination Equipment.

The Hughes name is well known throughout the world as a leader in quality, innovation and value for industrial safety showers and accessories. With many of our product lines assembled and customer service support from our North American headquarters in Ontario,

Canada and Houston, Texas, Hughes Safety Showers is rapidly becoming the safety shower of choice in the Oil, Gas, Petrochemical and Pharmaceutical industries we serve throughout the world.

All Emergency Safety Shower and Eyewash products presented here were designed and tested in line with the comprehensive American Standard ANSI Z 358.1-2009 and are also CE marked in accordance with relevant EC (European Community) directives. All electrical equipment, intended for use in a potentially explosive or hazardous environment has been tested and certified either in accordance with ATEX, UL or CSA directives and manufacturing to the Quality Assurance Standard BS EN ISO9002 ensures that only products of the highest standards are produced.



Hughes prides itself on excellence in research and development and our advanced ranges are the results of many years at the forefront of safety equipment design. Hughes products are renowned for their reliability, robust build quality and effectiveness when needed. Our award winning design and engineering facilities and products have benefitted from over 40 years of continuous evolution in materials research and manufacturing techniques. But perhaps most importantly we have listened and learned from the needs of our customers and the demands of strict health and safety legislation.

Now Hughes products are trusted and distributed in over 130 countries and are approved suppliers to the global engineering contractors and world leading end user companies. Through direct sales or our trusted distributor network Hughes Safety Showers are deployed in many of the largest and most high profile installations throughout the world – a trusted partner in the safety and security of the workforce and business compliance.

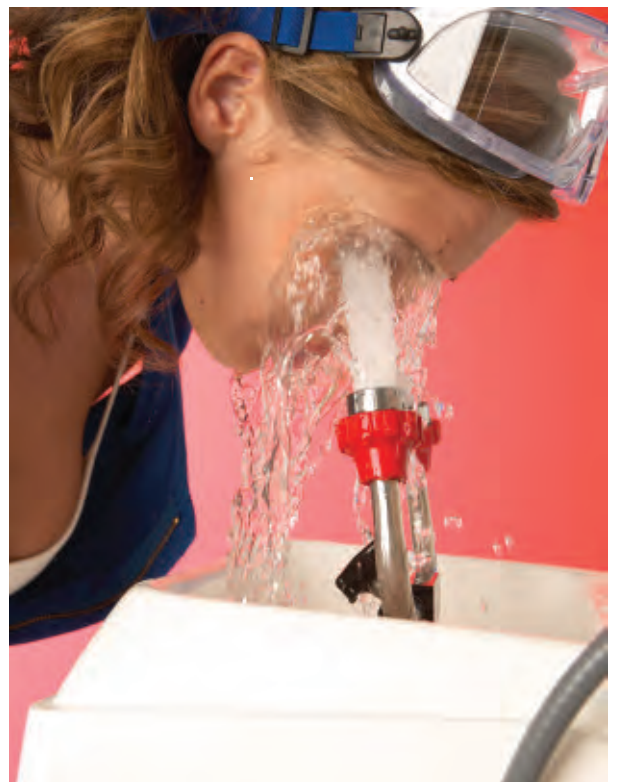
Hughes is proud to be serving and protecting North American companies and their employees from chemical burns and reducing injuries throughout industry. This catalogue of products is indicative of our standard product ranges, but please ask our technical sales teams about your customized requirements.

Thank You

The Hughes North American Office

Email: [info@hughes-safety.com](mailto:info@hughes-safety.com)

Web: [www.hughes-safety.com](http://www.hughes-safety.com)



Our policy is one of continuous improvement and we reserve the right to change specification at any time without notice.

## combating hazards

International legislation covering the installation, operation and maintenance of Emergency Safety Showers and Eye/Facewash equipment is becoming more stringent due to the increased use of chemicals or other substances hazardous to health.

It is widely recognized that when an accident happens then the affected area must be flushed with clean, cool water for a period of 15 minutes to ensure all chemicals are removed. The casualty must then seek expert medical advice, and in any case of doubt they must go immediately to hospital with a suitable dressing covering the affected area.

Typical of such occurrences are the spilling, splashing or spraying of acids, caustics, or other dangerous or corrosive agents. Other common hazards are fire and explosion. Where flammable liquids are present there is a hazard of clothing becoming ignited, only the prompt use of an Emergency Shower or Eye/Facewash Unit prevents major injury or death.

For this reason it is imperative that the correct Emergency Equipment is purchased and that it is suitably located, properly installed and effectively maintained. To ensure that the manufacturers of this type of equipment all produce products that will be adequate when needed there are several standards that have been published. The American National Standard ANSI Z 358.1 is by far the most comprehensive, being first published in 1981 and

subsequently revised in 1990, 1998, 2004 and 2009.

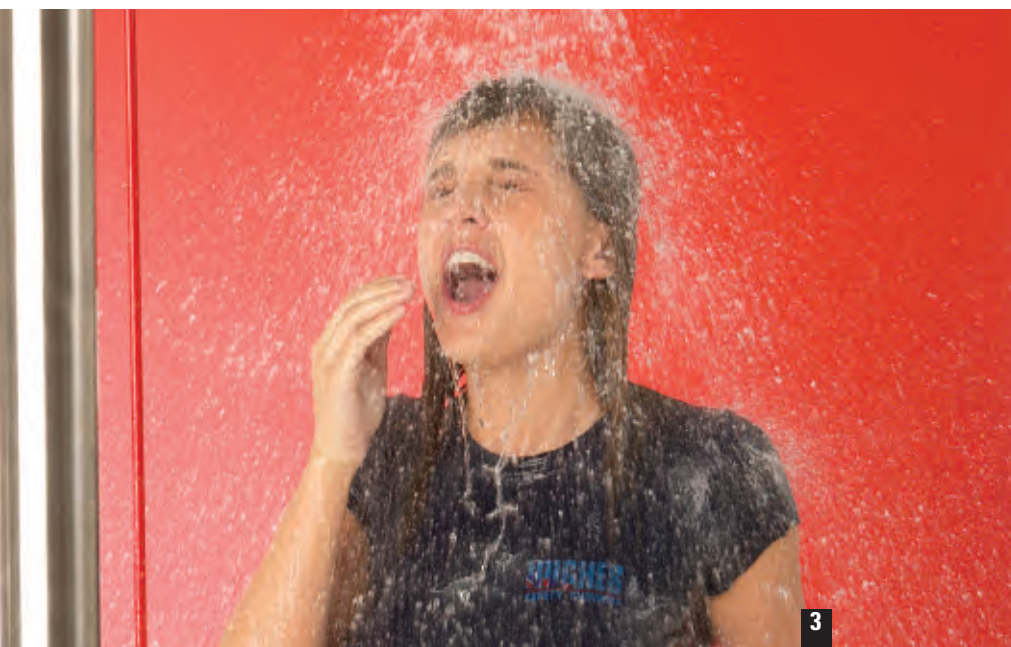
There is a European Standard (EN 15154) for Laboratory Showers and Eyewash equipment.

It must be noted and emphasized that the European

Standard specifies lower flow rates for Laboratory Units than the American Standard does for Industrial Units. For this reason it is imperative that the lower flow rate Laboratory Showers are not installed in industrial applications as this could have disastrous consequences.



<b>4</b>	<b>EYEWASH &amp; FACEWASH EQUIPMENT</b> EXTENSIVE RANGE TO SUIT ALL APPLICATIONS
<b>6</b>	<b>TANK SHOWERS</b> WHERE WARM WATER IS REQUIRED OR A CONSTANT SUPPLY CANNOT BE GUARANTEED
<b>10</b>	<b>TEMPERATURE CONTROLLED SHOWERS &amp; SHOWER CUBICLES</b> FOR USE IN COLD CLIMATES TO MAINTAIN A TEPID SHOWERING TEMPERATURE
<b>11</b>	<b>CUBICLES &amp; FRAMES</b> TO PROTECT THE SHOWER AND GIVE IT UNRESTRICTED FLOOR SPACE
<b>12</b>	<b>PREMIUM OUTDOOR EMERGENCY SHOWERS</b> IMMERSION HEATED OR TRACE TAPE HEATED MODELS FOR USE IN ALL AMBIENT CONDITIONS
<b>14</b>	<b>OUTDOOR EMERGENCY SHOWERS</b> FOR USE WHERE THERE IS A POSSIBILITY OF THE WATER IN THE SHOWER FREEZING OR OVERHEATING
<b>16</b>	<b>UNHEATED EMERGENCY SHOWERS</b> FOR USE IN ALL LOCATIONS WHERE THERE IS NO RISK OF FREEZING OR OVERHEATING
<b>18</b>	<b>SELF-DRAINING EMERGENCY SHOWERS</b> FOR USE IN HOT CLIMATES WHERE OVERHEATING OF CONTAINED WATER IS A PROBLEM
<b>19</b>	<b>LABORATORY RANGE</b> FOR USE IN LABORATORIES AND CLEAN INDOOR AREAS
<b>20</b>	<b>PPE DECONTAMINATION SHOWERS</b> FIXED AND PORTABLE UNITS FOR DECONTAMINATING PERSONAL PROTECTIVE EQUIPMENT
<b>21</b>	<b>CUBICLE SHOWERS</b> FULLY ENCLOSED EMERGENCY SHOWERS AND DECONTAMINATION UNITS
<b>22</b>	<b>DECONTAMINATION SHOWERS</b> PORTABLE UNITS FOR DECONTAMINATING OF CHEMICALS AND SPILLAGES



# eyewash & facewash equipment

An extensive range of plumbed-in units to enable continuous flushing with clean cool water, complemented by portable units for use at the scene of a possible incident.



## STD-38G

Portable Emergency Eye, Face and Body Shower unit. Incorporating an Optiflex Hand Shower with reinforced hose connected to a 14 liter (3.70 US Gallons) stainless steel cylinder. When pressurized to 8 bar via a schraeder valve this unit will deliver a copious quantity of water for nearly two minutes. Fitted with pressure gauge and dual action safety valve to prevent over pressurization and to allow user to vent the cylinder for cleaning and maintenance.

### OPTIONAL FITTINGS:

- 3 meter length of spring coiled hose
- Eyesaline concentrate



## STD-28G

Portable, hand-operated, Emergency Eyebath unit, incorporating a 9 liter (2.38 US Gallons) stainless steel cylinder with pressure gauge and eyebath diffuser on flexible hose. Capable of delivering a copious quantity of aerated water for two minutes. Available complete with wall cabinet if specified (see optional fittings below).

### OPTIONAL FITTINGS:

- Sign for wall mounting
- Cabinet for wall mounting with sign and green & white safety stripes
- Eyesaline concentrate



## PUREFLOW 1000

Fifteen minute self-contained, gravity fed Primary Eyewash Station. Capable of delivering 26.5 liters (7 US Gallons) of Eyesaline® solution from sealed cartridges at ambient temperature. The cartridges have a 24 month shelf life, thus reducing maintenance costs. Incorporating integral fluid reservoir to capture waste fluid, therefore eliminating a potential safety hazard. A 'Service Immediately' warning appears when the cartridges have been discharged. Unit comes complete with Wall Bracket. Shown with Universal Cart option. Cartridges not supplied with unit.

### OPTIONAL FITTINGS:

- Pureflow® Fluid Cartridges (2 pack)
- Universal Cart
- Cleaning Kit



## PORTA STREAM II

Fifteen minute self-contained, gravity fed Primary Eyewash Station. Capable of delivering 60 liters (15.85 US Gallons) of flushing solution at ambient temperature. Can be wall, table or cart mounted. Incorporates a lockable fill cap to reduce the risk of tampering with the solution. Includes Defend® Water Preservative and Wall Bracket.

### OPTIONAL FITTINGS:

- Defend® Water Preservative (4 pack)
- Eyesaline® Concentrate (2 or 5 liters)
- Dust Cover
- Waste Fluid Disposal Cart
- Universal Cart
- Cleaning Kit



## OPTIFLEX 100

Hand operated Eye, Face and Body Shower with unique lock-on facility. Supplied with a wall mounting bracket that incorporates a dust cover, a flexible 1.5 meter (59.05 inches) long reinforced hose, a non return valve and a flow regulator.

### OPTIONAL FITTINGS:

- Table mounting kit
- 3 meter length of spring coiled hose
- Twin spray head (Optiflex 500)



## P400

A portable self-contained eye wash unit providing 15 minutes of water flow The P400 includes a retractable tray to protect against airborne contaminants, supplied with bracket for wall mounting.

## STD-45G

"Unbreakable" Wall, Pedestal or Table Mounted Emergency Eye/Facewash Fountain with integral lid, aerated diffusers, flow regulator and self-adhesive sign. Pedestal version available in Galvanized or Stainless Steel.

Pedestal mounted model **STD-45G/P**

Table/Bench mounted model **STD-45G/T** (see page 17)

### OPTIONAL FITTINGS:

- Optiflex Hand Shower
- Additional Fine Mesh Filter
- Treadle Foot Control
- Proximity Switch



## STD-H-25K/P

Pedestal Mounted Emergency Eyewash/Facewash Fountain, trace tape heated and pre-insulated. Suitable for outdoor use. Incorporating an integral lid connected to the water valve which automatically operates the unit when the lid is lifted. The lid also ensures that the bowl remains clean and free from contamination at all times and is fitted with a mirror and first-aid instructions. With additional eyewash diffuser on flexible hose to treat unconscious or disabled personnel. Available in Galvanized or Stainless Steel.

### OPTIONAL FITTINGS:

- Treadle Foot Control
- Proximity Switch
- Cubicle



## STD-35G

Wall Mounted Emergency Eyewash and Safety Sign. The eyewash attachment is on a flexible hose incorporating a handle, removable eyewash cup and dust cover.

### OPTIONAL FITTINGS:

- Additional Fine Mesh Filter



## STD-25K

Wall or Pedestal Mounted Emergency Eyewash/Facewash Fountain incorporating an integral lid connected to the water valve to automatically operate the unit when the lid is lifted. The lid also ensures that the bowl remains clean and free from contamination at all times and is fitted with a mirror with first-aid instructions. With additional eyewash diffuser on flexible hose to treat unconscious or disabled personnel. Available in Galvanized or Stainless Steel.

Pedestal mounted model **STD-25K/P**

### OPTIONAL FITTINGS:

- Treadle Foot Control
- Proximity Switch

	Stainless Steel		Depth		Width		Height		Weight		Inlet Size (mm "inch) NPT	Min. Pressure		Water Flow	
	mm	"inch	mm	"inch	mm	"inch	mm	"inch	kg	lbs		kg/cm <sup>2</sup> (bar g)	PSI	liters per min	US Gallons per min
<b>Eyewash</b>															
STD-38G	-	220	8.66	220	8.66	725	28.54	5.5	12.13	-	-	8	113.79	8	2.11
STD-28G	-	180	7.09	180	7.09	650	25.59	3.5	7.72	-	-	7	99.56	4.5	1.19
Cabinet for 28G	-	240	9.45	330	12.99	880	34.65	5.5	12.13	-	-	-	-	-	-
STD-35G	-	115	4.53	340	13.39	175	6.89	2	4.41	15mm or 1/2"	1.5	21.34	4.5	1.19	
STD-45G	-	265	10.43	340	13.39	205	8.07	3	6.61	15mm or 1/2"	2	28.45	20	5.28	
STD-45G/P	STD-45GS/P	365	14.37	340	13.39	1175	46.26	10	22.05	1 1/4"	2	28.45	20	5.28	
STD-25K	STD-25KS	565	22.24	475	18.70	390	15.35	13	28.66	1/2"	2.2	31.29	30	7.93	
STD-25K/P	STD-25KS/P	580	22.83	475	18.70	1130	44.49	20	44.09	1 1/4"	2.2	31.29	30	7.93	
STD-H-25K/P	STD-H-25KS/P	720	28.35	475	18.70	1130	44.49	26	57.32	1 1/4"	2.2	31.29	30	7.93	
STD-75G	STD-85G	400	15.75	410	16.14	315	12.40	3.5	7.72	15mm or 1/2"	2	28.45	12	3.17	
STD-75G/P	STD-75GS/P	510	20.08	285	11.22	1175	46.26	8	17.64	1 1/4"	2	28.45	12	3.17	
STD-85G/P	STD-85GS/P	510	20.08	285	11.22	1175	46.26	8	17.64	1 1/4"	2	28.45	12	3.17	
OPTIFLEX 100	-	70	2.76	70	2.76	230	9.06	1	2.20	1/2"	1.5	21.34	8	2.11	
P400	-	250	9.84	580	22.83	400	15.75	40	88.18	-	-	-	1.5	0.4	
PUREFLOW 1000	-	440	17.32	740	29.13	760	29.92	10	22.05	-	-	-	1.5	0.4	
PORTA STREAM II	-	475	18.70	500	19.69	590	23.23	16.3	35.93	-	-	-	1.5	0.4	

# tank showers

A range of heavy duty Emergency Tank Showers, for use when warm water is required, or a constant supply of water cannot be guaranteed.

These units are essential where there is a problem with insufficient water pressure or inadequate flow rate.

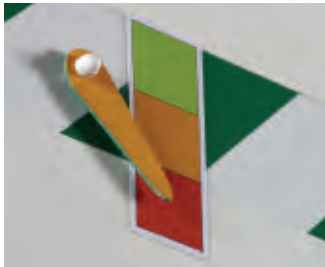
The outdoor types are heated and pre-insulated to prevent freezing during conditions of frost, whereas the indoor or tropical versions are insulated but without heating, to ensure a steady temperature is maintained.

Optional fittings are available to optimize the performance of the Tank Shower.

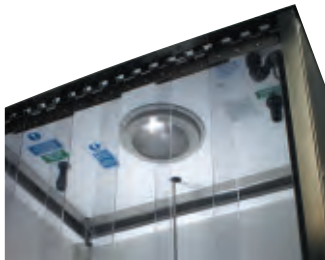
## EXP-MH-14K/1200



• Light & Light Box



• Visual Level Indicator



• Strip Screens



• Proximity Switches



• Valve heat tracing and Thermometer



• Audible and Visual Alarms



• Sunshields (for hot environments)



• Level Switch  
• Syphon Dump Valve



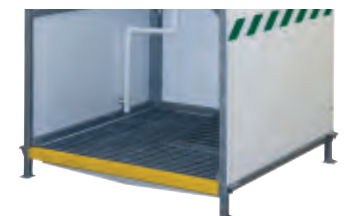
• Hand Held Eyebath Unit



• Shower Test Handle



• Eye/Facewash Fountain



• Drain Sump fitted with GRP panelling



**Tank Shower with Chiller**  
**EXP-J-14K/1200**  
 (With chiller for hot climates)



**Polar Tank Shower**  
**EXP-MH-14K/1200-POLAR**  
 (Insulated and heated for cold climates)

to tank showers

Galvanized	Stainless Steel	Depth		Width		Height		Weight		Inlet Size (mm " inch) NPT	Min. Pressure		Water Flow	
		mm	" inch	mm	" inch	mm	" inch	kg	lbs		kg/cm <sup>2</sup> (bar g)	PSI	liters per min	US Gallons per min
<b>Tank Showers</b>														
EXP-MH-14K/350	EXP-MH-14KS/350	880	34.64	1035	40.55	3170	124.80	277	610	3/4"	0.5	7.11	76	20
EXP-MH-14K/750	EXP-MH-14KS/750	1480	58.26	1310	51.57	3235	127.36	351	774	3/4"	0.5	7.11	76	20
EXP-MH-14K/1200	EXP-MH-14KS/1200	1480	58.26	1320	51.97	3590	141.33	367	809	3/4"	0.5	7.11	76	20
EXP-J-14K/350	EXP-J-14KS/350	880	34.64	1035	40.55	3170	124.80	277	610	3/4"	0.5	7.11	76	20
EXP-J-14K/750	EXP-J-14KS/750	1480	58.26	1310	51.57	3235	127.36	351	774	3/4"	0.5	7.11	76	20
EXP-J-14K/1200	EXP-J-14KS/1200	1480	58.26	1320	51.97	3590	141.33	367	809	3/4"	0.5	7.11	76	20
EXP-MH-14K/1200-POLAR	EXP-MH-14KS/1200-POLAR	1480	58.26	1320	51.97	3525	138.78	550	1212.53	3/4"	0.5	7.11	76	20

Indoor or Tropical models are denoted by the prefix -J- prior to the model number ie. EXP-J-14K/350  
 Stainless Steel models are denoted by the suffix "S" within the model number ie. EXP-MH-14KS/1200

# tank showers



## EXP-MH-14K/2000

The new Hughes Emergency Tank Shower incorporates a 2000 litre (530 US gallon) tank to deliver a guaranteed flow of water for over 20 minutes. The 2000 litre tank makes this an independent system without the need of piping, heating or mixing systems to comply with the 15 minute tepid water requirements of the ANSI standard.

The tank material is medium density polyethylene which is not prone to the problems of leaking experienced when storing static water in a stainless steel tank.

Our tank is insulated using high thermal efficiency polyurethane with silver foil lining to reduce heat loss or heat ingress due to conduction or radiation. This protects against frost damage in severe freezing conditions and also against external solar heating and high air ambient temperatures.

The tank lid is also insulated and sealed to prevent against airborne contamination entering the tank.

To protect against external conditions, the Tank Shower is encased in GRP; a hard-wearing chemical resistant, durable weather-proof material, which is easily cleaned. An integral immersion heater, controlled by a dual thermostat with automatic safety cut out maintains the temperature of the water within the insulated tank.

The shower is activated when the casualty operates the panic bar and/or stands on the optional foot panel control. All Hughes shower tanks are coated with BioStat self-sanitising technology, to effectively reduce bacterial growth on the inside of the tank walls.

Available with optional Eye/Facewash Fountain mounted internally to meet with ANSI Standard.

**Note:** The 2000 Litre (528 gallons) Tank Shower frame has been structurally tested Earthquake proof and has been designed to conform to the California Building Code 1998 Chapter 16, Division 1.

### BENEFITS

Suitable for extreme hot and cold climates

Flow rate for simultaneous use of shower and eye/face wash to meet ANSI standard.

Economical running costs due to low power consumption

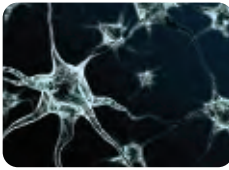
Suitable for extreme hot and cold climates

ANSI Z358.1.2009 compliant

### OPTIONAL FITTINGS:

- Light and light Box
- Eye/facewash fountain
- Panel Foot Control
- Hand Held Eyebath Unit
- Level switch
- Syphon Dump Valve
- Visual
- Proximity Switch
- Shower Test Handle
- Sunshield
- Chillers and Cooling Coils
- Drain Stump



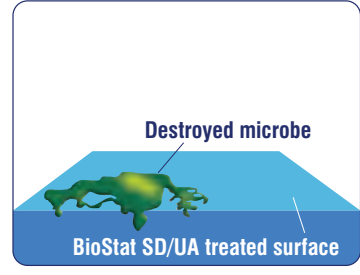
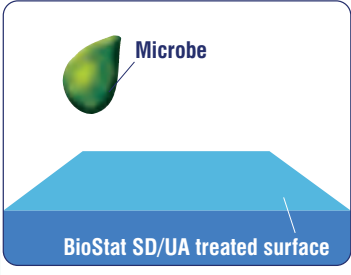


As part of the Hughes Safety Showers continuous improvement program we have introduced new measures in both the manufacture and servicing of our Safety Showers to control the growth and spread of bacteria. Bio-Stat is now applied to all Tank Shower inner lining as part of our hygiene and Infection Control protocols. When Bio-stat is applied to a surface it forms a Self Sanitizing Treatment (SST).

To help maintain and monitor the water quality within the Tank Showers between service periods as part of your required Legionella control, we now offer the **Huwa-san TR** range and test strips. **Huwa-san** is made up from Hydrogen Peroxide and a silver salt which are highly effective at removing biofilm and controlling Legionella. The silver breaks down the wall of the cell; the peroxide then kills the bacteria, making it superior to chlorine based technology and presents none of the hazards. Also, chlorine is bound by caustic soda and creates biofilm which can become a breeding ground for bacteria.

**BIO-STAT AND HUW-SAN BENEFITS AND STANDARDS**

- Non toxic
- Odorless
- Non-leaching can be used on food preparation surfaces (Bio-stat only)
- Meets BS EN ISO Standards
- Manufactured under EC Directives
- Strong chemical bonding process



**EXP-MH-14K/1600**

tan  
showerers

Galvanized	Stainless Steel	Depth		Width		Height		Weight		Inlet Size (mm / inch) NPT	Min. Pressure		Water Flow		
		mm	inch	mm	inch	mm	inch	kg	lbs		kg/cm <sup>2</sup> (bar g)	PSI	liters per min	US Gallons per min	
<b>Tank Showers</b>															
EXP-MH-14K/1600	EXP-MH-14KS/1600	1548	60.94	1837	72.32	3682	144.96	415	914	3/4"	0.5	7.11	76	20	
EXP-MH-14K/2000	EXP-MH-14KS/2000	1837	72.32	1837	72.32	3765	148.22	470	1036	3/4"	0.5	7.11	76	20	
EXP-J-14K/1600	EXP-J-14KS/1600	1548	60.94	1837	72.32	3682	144.96	415	914	3/4"	0.5	7.11	76	20	
EXP-J-14K/2000	EXP-J-14KS/2000	1837	72.32	1837	72.32	3765	148.22	470	1036	3/4"	0.5	7.11	76	20	

Indoor or Tropical models are denoted by the prefix **-J-** prior to the model number ie. **EXP-J-14K/1600**  
 Stainless Steel models are denoted by the suffix **"S"** within the model number ie. **EXP-MH-14KS/2000**

# temperature controlled showers and shower cubicles

Temperature Controlled Showers and Shower Cubicles have been developed for use in cold climates where it is necessary to maintain a tepid showering temperature or provide a warm environment for showering.



## STD-TC-100K/11K

The Temperature Controlled (TC) Emergency Safety Shower is intended for outdoor use where the water requires heating. It has a 300 liter (79.25 US Gallons) tank and 3kW heater and regardless of the ambient temperature will deliver tepid water for the ANSI recommended minimum period of 15 minutes. Water from the heated tank is mixed with the mains fed cold supply through a high flow rate thermostatically controlled valve to maintain a temperature of between 68 -95°F. In addition to delivering water at the required temperature through its own shower head, the TC unit can optionally supply heated water to other Emergency Showers via a second outlet from the tank. This means that several showers within an area can meet the temperature and duration criteria stipulated in the ANSI standard.

A side mounted Eyewash/Facewash can be supplied. A temperature controlled unit can be provided just to supply heated water to other shower and eyewash units.

### OPTIONAL FITTINGS:

- Foot Panel for shower
- Foot Treadle for Eyewash/Facewash
- Non Flameproof Light
- Zone 1 & 2 Light
- Light Box
- Alarms
- Heated Underground Extension Pipe
- Protective Frame
- Secondary Outlet



## TEMPERATURE CONTROLLED SHOWER CUBICLE

The Temperature Controlled Shower Cubicle is designed for outdoor use in exposed freezing conditions. Hot water storage is provided in a 450 liter (119 US gallons) insulated water tank, immersion heated with thermostat. Designed to deliver tepid water for the ANSI recommended 15 minutes. The cubicle is fitted with a thermostatically controlled air heater and is pre-insulated to help maintain a warm internal temperature.

Push open doors give unimpeded access and automatically close behind the casualty on entry. Windows in the doors enable the casualty to be monitored whilst using the shower which is imperative in case assistance is required. Hot water storage is also available in 300 liter (79 US gallons), 450 liter (118 US gallons) and 550 liter (145 US gallons) tanks.

# cubicles and frames

Cubicles and Protective Frames have been designed for situations where an Emergency Shower needs its own floor space, particularly if space is at a premium. They protect against damage and prevent clutter around the Shower and Eyewash/Facewash and ensure accessibility in an emergency.



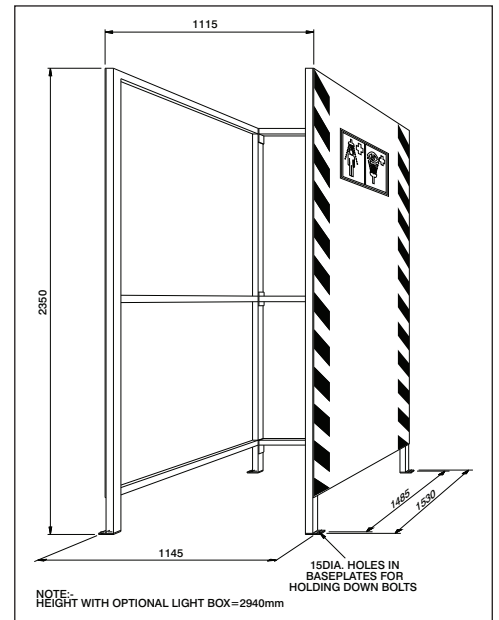
## CUBICLE WITH SUMP

Heavy duty Shower Cubicle with an integral drain sump. Galvanized mild steel rectangular hollow section frame with white fiberglass panelling and hold down lugs. With self-adhesive pictogram 'Shower' and/or 'Eye Wash' signs and green and white safety stripes.

Size and orientation of drain outlet to suit customer requirements (2" NPT standard).

### OPTIONAL FITTINGS:

- Semi-polished stainless steel frame
- Green or yellow fiberglass panelling
- Clear polycarbonate panelling
- Stainless steel panelling
- Flexible PVC strip screens fitted to entrance
- Light Box
- Extra large Cubicles available to suit Eye/Facewash on side of shower facing forward



## CUBICLE

Heavy duty Shower Cubicle. Galvanized mild steel rectangular hollow section frame with white fiberglass panelling and holding down lugs. With self-adhesive pictogram 'Shower' and/or 'Eye Wash' signs and green and white safety stripes.

### OPTIONAL FITTINGS:

- Semi-polished stainless steel frame
- Green or yellow fiberglass panelling
- Clear polycarbonate panelling
- Stainless steel panelling
- Flexible PVC strip screens fitted to entrance
- Light Box
- Extra large Cubicles available to suit Eye/Facewash on side of shower facing forward

## PROTECTIVE FRAME

Galvanized mild steel rectangular hollow section frame with foot grating incorporating Panel Type Foot Control. Top of frame sheeted with white fiberglass sheet bearing green and white safety stripes and pictogram 'Shower' and 'Eye Wash' signs.

### OPTIONAL FITTINGS:

- Semi-polished stainless steel frame
- Green or yellow fiberglass panelling
- Panelling on two sides
- Panelling on three sides
- Stainless steel panelling
- Flexible PVC strip screens fitted to entrance and/or sides
- Light Box
- Extra large Frames available to suit Eye/Facewash on side of shower facing forward



## TECHNICAL DETAILS

A choice of materials and colors are available for the panelling, and the frames can be manufactured in either stainless steel or galvanized mild steel.

	Depth		Width		Height		Weight		Inlet Size	Outlet Size	Min. Pressure		Water Flow	
	mm	"inch	mm	"inch	mm	"inch	kg	lbs	(mm "inch)	(mm "inch)	kg/cm <sup>2</sup>	PSI	liters	US Gallons
									NPT	NPT	(bar g)		per min	per min
<b>Temperature Controlled Showers</b>														
STD-TC-100K/11K	1625	63.98	1275	50.20	2710	106.69	235	518.08	1 1/4"	-	2.2	31.29	76	20.08
Temperature Controlled Shower Cubicle	1595	62.80	1370	53.94	2600	102.36	350	772	-	2"	-	-	-	-
<b>Cubicles and Protective Frames</b>														
Cubicle with sump	1530	60.24	1115	43.90	2350	92.52	240	529.10	-	2"	-	-	-	-
Protective Frame	1300	51.18	1000	39.37	2700	106.30	180	396.83	-	-	-	-	-	-
Cubicle	1530	60.24	1115	43.90	2350	92.52	75	165.35	-	-	-	-	-	-

# premium outdoor emergency shower

An extensive range of Immersion Heated or Trace Tape Heated models operable in all ambient conditions. Of robust design and including integral light box and pictogram signs.

## STD-MH-5K/11K

Premium Emergency Safety Shower, immersion heated and pre-insulated. With Eyewash/Facewash Fountain and additional eyewash diffuser on flexible hose to treat unconscious or disabled personnel.

Available in Galvanized or Stainless Steel.

Trace Tape heated model - **STD-H5K/11K**

### OPTIONAL FITTINGS:

- Foot Treadle for Eyewash/Facewash
- Zone 1 & 2 Light
- Proximity Switches
- Heated Underground Extension Pipe
- Cubicle

## STD-MH-5K

Premium Emergency Safety Shower, immersion heated and pre-insulated.

As 5K/11K but without Eyewash/Facewash Fountain.

Trace Tape heated model - **STD-H-5K**

## STD-MH-6K

Premium Emergency Safety Shower with Eyewash, immersion heated and pre-insulated. The eyewash attachment is on a flexible hose and incorporates a handle, removable eyewash cup and dust cover.

(Eyewash can be located on rear of unit if requested)

Available in Galvanized or Stainless Steel.

Trace Tape heated model - **STD-H-6K**

### OPTIONAL FITTINGS:

- Zone 1 & 2 Light
- Proximity Switches
- Heated Underground Extension Pipe
- Cubicle



Proximity switch detail



**STD-MH-5K/11K**



## STD-H-1K

Wall mounted Emergency Safety Shower unit with Eyewash attachment, trace tape heated and pre-insulated. The eyewash attachment is on a flexible hose and incorporates a handle, removable eyewash cup and dust cover. This unit also features a wall mounting plate and has an alternative water inlet.

Available in Galvanized or Stainless Steel.

### OPTIONAL FITTINGS:

- Zone 1 & 2 Light
- Proximity Switches



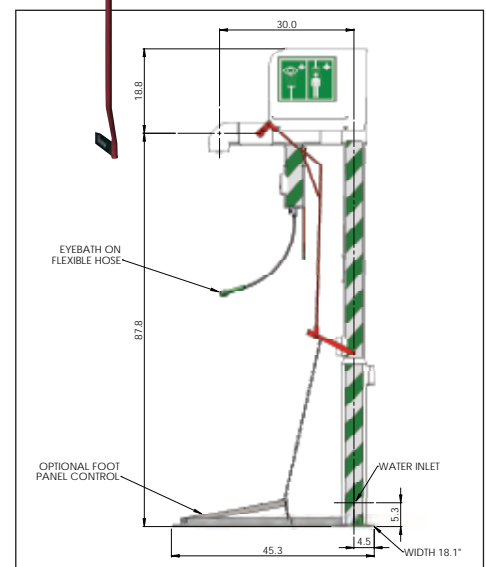
## STD-H-2K

Wall mounted Emergency Safety Shower unit, trace tape heated and pre-insulated. This unit also features a wall mounting plate and has an alternative water inlet.

Available in Galvanized or Stainless Steel.

### OPTIONAL FITTINGS:

- Zone 1 & 2 Light
- Proximity Switch



**STD-MH-6K**



## STD-MH-15K

Premium Emergency Safety Shower with additional Body Spray, immersion heated and pre-insulated. Available in Galvanized or Stainless Steel.

Trace Tape heated model - **STD-H-15K**

### OPTIONAL FITTINGS:

- Foot Panel
- Zone 1 & 2 Light
- Proximity Switch
- Heated Underground Extension Pipe
- Cubicle



## STD-MH-17K

Premium Emergency Safety Shower with additional Body Spray and Eyewash, immersion heated and pre-insulated. The Eyewash attachment is on a flexible hose and incorporates a handle, removable eyewash cup and dust cover.

Available in Galvanized or Stainless Steel.

Trace Tape heated model - **STD-H-17K**

### OPTIONAL FITTINGS:

- Foot Panel
- Zone 1 & 2 Light
- Proximity Switches
- Heated Underground Extension Pipe
- Cubicle



## PRODUCT INFO

- Rotationally moulded unbreakable white polyethylene outer casing
- Integral Light Box
- Self-draining removable spray nozzles free from build-up of bacteria
- Heated versions for use in cold climates
- Insulated versions for use in hot climates
- Robust construction
- Wall mounted models
- Free standing models

## TECHNICAL DETAILS

- Modular design
- Easy maintenance

## CHOICES

- Available in Galvanized or Stainless Steel

Galvanized	Stainless Steel	Depth		Width		Height		Weight		Inlet Size (mm "inch) NPT	Min. Pressure		Water Flow	
		mm	"inch	mm	"inch	mm	"inch	kg	lbs		kg/cm <sup>2</sup> (bar g)	PSI	liters per min	US Gallons per min
<b>Premium Heated Emergency Showers</b>														
STD-H-1K	STD-H-1KS	975	38.39	255	10.04	910	35.83	25	55.12	1"	1.5	21.34	76	20.08
STD-H-2K	STD-H-2KS	975	38.39	255	10.04	590	23.23	20	44.09	1"	1.5	21.34	76	20.08
STD-MH-5K	STD-MH-5KS	835	32.87	325	12.80	2705	106.50	60	132.28	1 1/4"	1.5	21.34	76	20.08
STD-H-5K	STD-H-5KS	835	32.87	325	12.80	2705	106.50	60	132.28	1 1/4"	1.5	21.34	76	20.08
STD-MH-6K	STD-MH-6KS	835	32.87	325	12.80	2705	106.50	70	154.32	1 1/4"	1.5	21.34	76	20.08
STD-H-6K	STD-H-6KS	835	32.87	325	12.80	2705	106.50	70	154.32	1 1/4"	1.5	21.34	76	20.08
STD-MH-5K/11K	STD-MH-5KS/11KS	855	33.66	480	18.90	2705	106.50	55	121.25	1 1/4"	2.2	31.29	76	20.08
STD-H-5K/11K	STD-H-5KS/11KS	855	33.66	480	18.90	2705	106.50	55	121.25	1 1/4"	2.2	31.29	76	20.08
STD-MH-15K	STD-MH-15KS	890	35.04	460	18.11	2705	106.50	90	198.41	1 1/2"	1.8	25.60	115	30.38
STD-H-15K	STD-H-15KS	890	35.04	460	18.11	2705	106.50	90	198.41	1 1/2"	1.8	25.60	115	30.38
STD-MH-17K	STD-MH-17KS	890	35.04	460	18.11	2705	106.50	95	209.44	1 1/2"	1.8	25.60	115	30.38
STD-H-17K	STD-H-17KS	890	35.04	460	18.11	2705	106.50	95	209.44	1 1/2"	1.8	25.60	115	30.38

Note: All above models available with insulation only (no heating) STD-J (model No.)

# outdoor emergency showers

Designed for use throughout industry, in all applications where there is a possibility of the water inside the shower freezing or overheating due to ambient temperatures.



## EXP-AH-2G

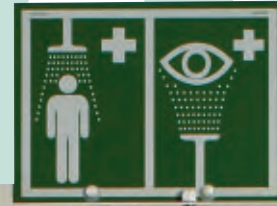
Wall Mounted Emergency Safety Shower, trace tape heated and pre-insulated. Complete with a wall mounting plate and alternative water inlet.

Available in Galvanized or Stainless Steel.

EXP-EJ-2G insulated only.

### OPTIONAL FITTINGS:

- Light
- Light Box
- Proximity Switch



## EXP-AH-5G/45G

Emergency Safety Shower with Eye/Facewash Fountain, trace tape heated and pre-insulated.

Available in Galvanized or Stainless Steel.

EXP-EJ-5G/45G insulated only.

### OPTIONAL FITTINGS:

- Treadle Foot Control for Eye/Facewash
- Light
- Light Box
- Alarm
- Underground Extension Pipe
- Cubicle



## EXP-AH-5G

Emergency Safety Shower, trace tape heated and pre-insulated.

Available in Galvanized or Stainless Steel.

EXP-EJ-5G insulated only.

### OPTIONAL FITTINGS:

- Foot Panel or Treadle
- Light
- Light Box
- Proximity Switch
- Underground Extension Pipe
- Cubicle



## EXP-AH-45G/P

Pedestal Mounted Emergency Eye/Facewash Fountain, trace tape heated and pre-insulated. With 'unbreakable' integral lid, aerated diffusers, flow regulator and self-adhesive sign.

Available in Galvanized or Stainless Steel.

EXP-EJ-45G/P insulated only.

### OPTIONAL FITTINGS:

- Treadle Foot Control
- Proximity Switch
- Underground Extension Pipe
- Cubicle

## PRODUCT INFO

- Heated versions for use in cold climates
- Insulated versions for use in hot climates
- Arctic versions with extra heating for very cold climates
- Wall mounted models
- Free standing models

## TECHNICAL DETAILS

- Modular design
- Easy maintenance
- Self-draining removable spray nozzles free from build up of bacteria
- Compact packaging
- Cost effective carriage

## CHOICES

- Available in Galvanized or Stainless Steel

### EXP-AH-5G/34G

Emergency Safety Shower with Eye/Facewash Diffusers, trace tape heated and pre-insulated.  
Available in Galvanized or Stainless Steel.  
EXP-EJ-5G/34G insulated only.

#### OPTIONAL FITTINGS:

- Treadle Foot Control for Eye/Facewash
- Light
- Light Box
- Proximity Switches
- Underground Extension Pipe
- Cubicle



### EXP-AH-5G/10G

Emergency Safety Shower with body spray, trace tape heated and pre-insulated.  
Available in Galvanized or Stainless Steel.  
EXP-EJ-5G/10G insulated only.

#### OPTIONAL FITTINGS:

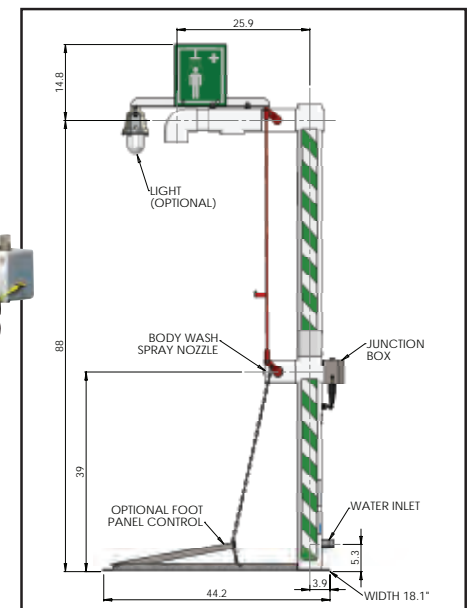
- Foot Panel or Treadle
- Light
- Light Box
- Proximity Switch
- Underground Extension Pipe
- Cubicle

### EXP-AH-5G/35G

Emergency Safety Shower with Eyewash on flexible hose, trace tape heated and pre-insulated.  
Available in Galvanized or Stainless Steel.  
EXP-EJ-5G/35G insulated only.

#### OPTIONAL FITTINGS:

- Treadle Foot Control for Eyewash
- Light
- Light Box
- Proximity Switches
- Underground Extension Pipe
- Cubicle



Galvanized	Stainless Steel	Depth		Width		Height		Weight		Inlet Size	Min. Pressure		Water Flow	
		mm	" inch	mm	" inch	mm	" inch	mm	lbs	(mm " inch)	kg/cm <sup>2</sup>	PSI	liters per min	US Gallons per min
<b>Heated Emergency Showers</b>														
EXP-AH-2G	EXP-AH-2GS	930	36.61	230	9.06	230	9.06	26	57.32	1"	1.5	21.34	76	20.08
EXP-AH-45G/P	EXP-AH-45GS/P	500	19.69	340	13.39	1180	46.46	26	57.32	1 1/4"	2	28.45	20	5.28
EXP-AH-5G	EXP-AH-5GS	850	33.46	150	5.91	2310	90.94	30	66.14	1 1/4"	1.5	21.34	76	20.08
EXP-AH-5G/10G	EXP-AH-5GS/10GS	850	33.46	460	18.11	2310	90.94	32	70.55	1 1/4"	1.8	25.60	115	30.38
EXP-AH-5G/34G	EXP-AH-5GS/34GS	850	33.46	300	11.81	2310	90.94	32	70.55	1 1/4"	2.2	31.29	76	20.08
EXP-AH-5G/35G	EXP-AH-5GS/35GS	850	33.46	240	9.45	2310	90.94	32	70.55	1 1/4"	1.5	21.34	76	20.08
EXP-AH-5G/45G	EXP-AH-5GS/45GS	850	33.46	340	13.39	2310	90.94	34	74.96	1 1/4"	2	28.45	76	20.08

**NOTE:** The above models are available with insulation only (no heating) - see description for model numbers.

# unheated emergency showers

A range of Unheated Emergency Safety Showers and Eyewash/Facewash models, designed for use throughout industry, in all applications not subject to the possibility of freezing or overheating, depending on local ambient conditions. All units are made up of separate modules to facilitate economic packing and freight.



## EXP-23G/H

Unheated Wall Mounted Emergency Safety Shower with wall mounting plate.

Available in Galvanized or Stainless Steel.

**Note:** Available without wall mounting plate - Model EXP-23G

### OPTIONAL FITTINGS:

- Plastic or Stainless Steel Shower Rose
- Optiflex Hand Shower
- Light
- Proximity Switch



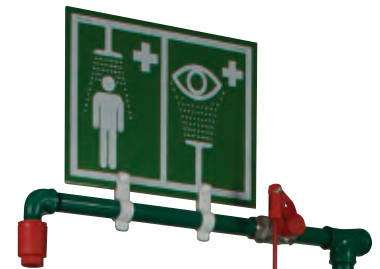
## EXP-23G/V

Unheated Ceiling Mounted Emergency Safety Shower with ceiling mounting plate.

Available in Galvanized or Stainless Steel.

### OPTIONAL FITTINGS:

- Plastic or Stainless Steel Shower Rose
- Optiflex Hand Shower
- Proximity Switch



## EXP-18G/45G

Unheated Emergency Safety Shower with Eye/Facewash Fountain. With low level water inlet.

Available in Galvanized or Stainless Steel.

**Note:** Eye/Facewash orientation can be varied to suit clients' requirements.

### OPTIONAL FITTINGS:

- Plastic or Stainless Steel Shower Rose
- Optiflex Hand Shower
- Treadle for Eye/Facewash
- Light
- Proximity Switches
- Cubicle



## EXP-18G

Unheated Emergency Safety Shower. Available in Galvanized or Stainless Steel.

### OPTIONAL FITTINGS:

- Plastic or Stainless Steel Shower Rose
- Optiflex Hand Shower
- Foot Panel or Treadle
- Light
- Proximity Switch
- Cubicle



## EXP-20G

Unheated Emergency Safety Shower with additional body spray.

Available in Galvanized or Stainless Steel.

### OPTIONAL FITTINGS:

- Plastic or Stainless Steel Shower Rose
- Optiflex Hand Shower
- Foot Panel or Treadle
- Light
- Proximity Switch
- Cubicle



## PRODUCT INFO

- Unheated models for indoor use
- Free standing, wall or ceiling mounted
- Easy maintenance

## TECHNICAL DETAILS

- Separate modules
- Compact packaging
- Cost effective carriage

## CHOICES

- Low-level or high-level water inlet
- Body spray
- Eye/Facewash units
- Eye/Facewash drain piped to floor level
- Available with tubulars either of galvanized carbon steel protected by green powder coating, or alternatively of semi-polished Stainless Steel
- Mobile Model

### EXP-18G/45G-T

As EXP-18G/45G but with Eye/Facewash drain piped to floor level and high level water inlet. Available in Galvanized or Stainless Steel.

**OPTIONAL FITTINGS:**  
(as EXP-18G/45G)



### EXP-18G/75G

Unheated Emergency Safety Shower with Eye/Facewash Fountain. With high level water inlet and Eye/Facewash drained to floor level.

Available in Galvanized or Stainless Steel.

**Note:** Eye/Facewash orientation can be varied to suit clients' requirements.

Available with Stainless Steel Eye/Facewash bowl EXP-18G/85G.

#### OPTIONAL FITTINGS:

- Plastic or Stainless Steel Shower Rose
- Treadle for Eye/Facewash
- Light
- Proximity Switches
- Cubicle



### STD-40K

Mobile Emergency Safety Shower with a capacity of approx 114 liters (30.12 US Gallons) giving a constant flow of water for about 1½ minutes.

Mobile Emergency Safety Showers are for use when fixed units are not available or are temporarily out of commission.

**Note:** This shower must be supported by a plumbed-in Emergency Safety Shower or Eye/Facewash unit to be ANSI compliant.

#### OPTIONAL FITTINGS:

- Optiflex Hand Shower
- Eye/Facewash STD-45G
- A-Frame for towing



Galvanized	Stainless Steel	Depth		Width		Height		Weight		Inlet Size (mm "inch) NPT	Min. Pressure		Water Flow	
		mm	"inch	mm	"inch	mm	"inch	kg	lbs		kg/cm <sup>2</sup> (bar g)	PSI	liters per min	US Gallons per min
<b>Unheated Safety Showers</b>														
EXP-18G	EXP-18GS	750	29.53	150	5.91	2300	90.55	15	33.071	1¼"	1.5	21.34	76	20.08
EXP-18G/45G	EXP-18GS/45G	750	29.53	340	13.39	2300	90.55	18	39.68	1¼"	2	28.45	76	20.08
EXP-18G/45G-T	EXP-18GS/45G-T	750	29.53	340	13.39	2330	91.73	18	39.68	1¼"	2	28.45	76	20.08
EXP-20G	EXP-20GS	1050	41.34	460	18.11	2300	90.55	16	35.27	1¼"	1.8	25.60	115	30.38
EXP-23G/V	EXP-23GS/V	150	5.91	150	5.91	370	14.57	3.5	7.72	1"	1.5	21.34	76	20.08
EXP-23G/H	EXP-23GS/H	705	27.76	150	5.91	185	7.28	4.5	9.92	1"	1.5	21.34	76	20.08
EXP-23G	EXP-23GS	635	25.00	100	3.94	130	5.12	3	6.61	1"	1.5	21.34	76	20.08
EXP-18G/75G	EXP-18GS/75G	750	29.53	285	11.22	2330	91.73	16	35.27	1¼"	2	28.45	76	20.08
EXP-18G/85G	EXP-18GS/85G	750	29.53	285	11.22	2330	91.73	16	35.27	1¼"	2	28.45	76	20.08
STD-40K (Stowed dims.)	-	1170	46.06	780	30.71	1430	56.30	105	231.48	½" Coupling	-	-	-	-
STD-40K (Erected dims.)	-	1480	58.27	780	30.71	2250	88.58	220	485.01	½" Coupling	2	28.45	76	20.08

**STD-40K is a mobile unit. All other units are free standing except EXP-23G/V which is ceiling mounted, and EXP-23G/H which is wall mounted.**

# self-draining emergency showers

For use outdoors in tropical climates. Fitted with self-draining valves to reduce overheating by solar radiation.

## EXP-SD-18G/45G

Self-draining Emergency Safety Shower with Eye/Facewash Fountain. The main shower valve is situated directly above the water inlet and is complete with bleed pipe to drain water from the standpipe to reduce overheating by solar radiation.

Available in Galvanized or Stainless Steel.

### OPTIONAL FITTINGS:

- Plastic or Stainless Steel Shower Rose
- Treadle for Eye/Facewash
- Light
- Proximity Switches
- Cubicle



## EXP-SD-18G/25K

Self-draining Emergency Safety Shower with Eyewash/Facewash Fountain. With additional eyewash diffuser on flexible hose to treat unconscious or disabled personnel. The shower and Eyewash/Facewash valves are situated directly above the water inlet and are complete with bleed pipes to drain water from the pipework to reduce overheating by solar radiation.

Available in Galvanized or Stainless Steel.

### OPTIONAL FITTINGS:

- Plastic or Stainless Steel Shower Rose
- Treadle for Eyewash/Facewash
- Light
- Proximity Switches
- Cubicle



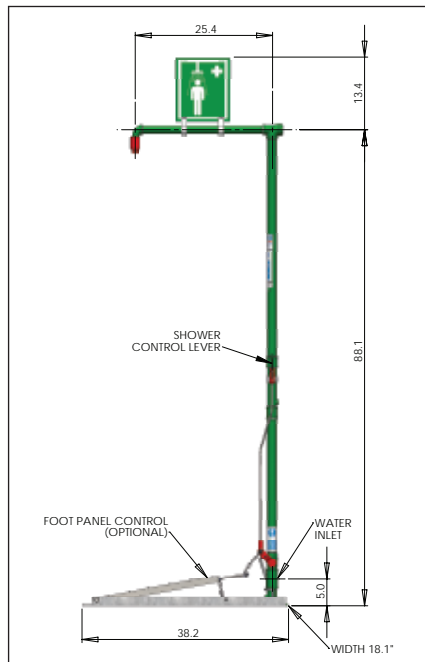
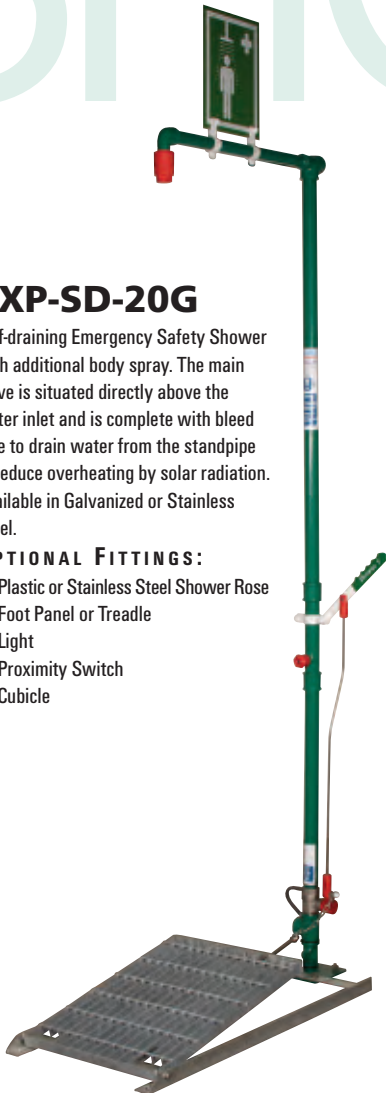
## EXP-SD-20G

Self-draining Emergency Safety Shower with additional body spray. The main valve is situated directly above the water inlet and is complete with bleed pipe to drain water from the standpipe to reduce overheating by solar radiation.

Available in Galvanized or Stainless Steel.

### OPTIONAL FITTINGS:

- Plastic or Stainless Steel Shower Rose
- Foot Panel or Treadle
- Light
- Proximity Switch
- Cubicle



## EXP-SD-18G

As EXP-SD-20G but without body spray.

## PRODUCT INFO

- Self-draining shower valves
- Free standing models
- Separate modules
- Easy maintenance
- Compact packaging
- Cost effective carriage

## TECHNICAL DETAILS

- Available with tubulars either of galvanized carbon steel protected by green powder coating, or alternatively of semi-polished stainless steel

## CHOICES

- Body spray
- Eyewash and Facewash units

# laboratory range

For use in laboratories and clean indoor areas where small spillages of dangerous chemicals or fire cause a hazard to employees.



## LAB-33GS/34G

Wall Mounted Combination Laboratory Shower and Eye/Facwash Fountain with wall mounting plates. The shower has a shower rose and is pull rod operated, whereas the eye/facewash has twin spray nozzles with dust covers and is push plate operated. The water jets lift off the dust covers when operated and the height of the jets is adjustable using an integral flow regulator valve.

Free standing floor mounted model

### LAB-18GS/34G

#### OPTIONAL FITTINGS:

- Hose Mounted Optiflex Eye/Face & Body Shower
- Proximity Switches

## STD-45G/T

Table or Bench Mounted 'unbreakable' Eye/Facwash Fountain with integral lid, aerated diffusers, flow regulator and self-adhesive sign.

For Wall or Pedestal mounted models see page 5.

#### OPTIONAL FITTINGS:

- Additional Fine Mesh Filter
- Proximity Switch



## LAB-23GS/V

Ceiling Mounted Laboratory Shower with shower rose and ceiling flange.

**Note:** Made to measure depending on ceiling cavity dimensions.

#### OPTIONAL FITTINGS:

- Proximity Switch
- Ceiling Mounting Kit



## LAB-23GS/H

Wall Mounted Laboratory Shower with shower rose and wall mounting plate.

**Note:** Available without wall mounting plate - Model LAB-23GS

#### OPTIONAL FITTINGS:

- Hose Mounted Optiflex Eye/Face & Body Shower
- Proximity Switch

## PRODUCT INFO

- Unheated models for indoor use
- Wall, ceiling or floor mounted models
- Compact packaging
- Cost effective carriage

## TECHNICAL DETAILS

- Powder coated stainless steel shower roses and Eye/Facwash bowls
- Ground welds on stainless steel models

## CHOICES

- Body spray hand shower
- Eye/Facwash unit
- Color
- Powder coated stainless steel pipework (with 'S' suffix)
- Painted galvanized carbon steel pipework (without 'S' suffix)

## LAB-85GS/T

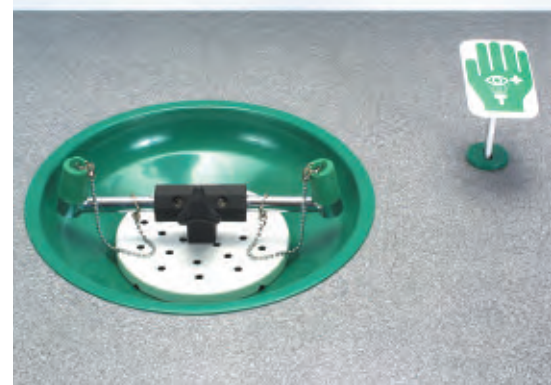
Table or Bench Mounted Eye/Facwash Fountain with flush fitting bowl and twin spray nozzles fitted with dust covers. The water jets lift off the dust covers when operated and the height of the jets is adjustable using a flow regulator valve. Push plate operated.

Wall mounted model LAB-85GS

Pedestal mounted model LAB-85GS/P

#### OPTIONAL FITTINGS:

- Additional Fine Mesh Filter
- Proximity Switch



Galvanized	Stainless Steel	Depth		Width		Height		Weight		Inlet Size (mm "inch) NPT	Min. Pressure		Water Flow		
		mm	"inch	mm	"inch	mm	"inch	kg	lbs		kg/cm <sup>2</sup> (bar g)	PSI	liters per min	US Gallons per min	
<b>Self-draining Showers</b>															
EXP-SD-18G	EXP-SD-18GS	750	29.53	425	16.73	2260	88.98	15	33.07	1 1/4"	1.8	25.60	76	20.08	
EXP-SD-20G	EXP-SD-20GS	750	29.53	425	16.73	2260	88.98	16	35.27	1 1/4"	1.8	25.60	115	30.38	
EXP-SD-18G/45G	EXP-SD-18GS/45G	750	29.53	520	20.47	2260	88.98	18	39.68	1 1/4"	2	28.45	76	20.08	
EXP-SD-18G/25K	EXP-SD-18GS/25KS	750	29.53	570	22.44	2260	88.98	25	55.12	1 1/4"	2.2	31.29	76	20.08	
<b>Lab Range</b>															
LAB-23G/H	LAB-23GS/H	770	30.31	260	10.24	240	9.45	3.5	7.72	1"	1.5	21.34	76	20.08	
LAB-23G/V	LAB-23GS/V	260	10.24	300	11.81	275	10.83	2.5	5.51	1"	1.5	21.34	76	20.08	
LAB-33G/34G	LAB-33GS/34G	770	30.31	260	10.24	1400	55.12	9	19.84	1"	2	28.45	76	20.08	
-	LAB-85GS/T	275	10.83	400	15.75	160	6.30	2.5	5.51	3/4"	2	28.45	12	3.17	
STD-45G/T	-	265	10.43	340	13.39	300	11.81	3.5	7.72	15mm or 1/2"	2	28.45	20	5.28	

# ppe decontamination showers

A selection of Decontamination Showers used for the effective decontamination of Personal Protective Equipment.



## DEC-V-5

Two stage Decontamination Shower with detergent application followed by wash down shower action.

Incorporating a detergent inducing venturi feeding an overhead shower rose and hose brush, and 10 shower nozzles for the secondary wash down. With green fiberglass panelling as standard.

Available with Stainless Steel pipework

### DEC-V-5S.

#### OPTIONAL FITTINGS:

- Drain Sump
- Flexible PVC strip screens fitted to entrance
- 38mm lay-flat delivery hose
- Galvanized painted panelling
- Stainless steel panelling



## DEC-D-29

Basically similar to the Venturi Shower with green fiberglass panelling, but does not incorporate the venturi detergent inducer.

Available with Stainless Steel pipework

### DEC-D-29S.

#### OPTIONAL FITTINGS:

- Drain Sump
- Flexible PVC strip screens fitted to entrance
- 38mm lay-flat delivery hose
- Galvanized painted panelling
- Stainless steel panelling



## DEC-V-1

Wall mounted Decontamination Shower with venturi detergent inducer. With tubulars manufactured from stainless steel milk tubing. For use in clean areas typically found in the pharmaceutical industry.

## DEC-V-2

Wall mounted Decontamination Shower with venturi detergent inducer. With tubulars manufactured from stainless steel standard tubing.

## DEC-V-3

Wall mounted Decontamination Shower with venturi detergent inducer. With tubulars manufactured from galvanized and powder coated carbon steel tubing.



When the location is of a temporary nature these units can be easily sited by Fork Lift Truck and connected to the water main by using 38mm lay-flat delivery hose.



**STD-SD-31K**

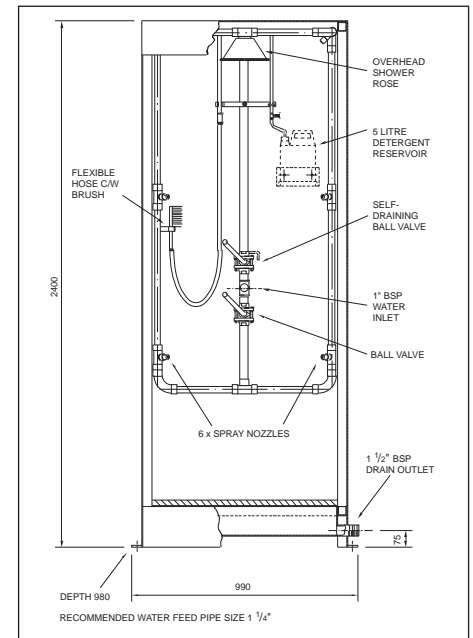
**STD-SD-31K/V**

**PRODUCT INFO**

Three basic models:  
**STD-SD-32K** - a simple Emergency Shower with overhead spray and optional body spray.  
**STD-SD-31K** - a simple Decontamination Shower with a multi-nozzle spray system.  
**STD-SD-31K/V** a two stage Decontamination Unit incorporating a detergent inducer.

**OPTIONAL FITTINGS**

- Body Spray (32K only)
- Eye/Facewash **STD-45G**
- Optiflex Hand Shower
- Panel Foot Control (not 31K/V)
- Strip Screens
- Shower Door
- Light
- Proximity Switches
- Brush on hose (31K/V only)



**STD-SD-32K**

# cubicle showers

These cubicle models are ideal in situations where a shower needs to be totally enclosed, particularly if space is at a premium or where a shower requires its own designated area due to clutter. Also very popular where it is imperative that there is no overspray of water outside the shower area.

Galvanized	Stainless Steel	Depth mm	inch	Width mm	inch	Height mm	inch	Weight kg	lbs	Inlet Size (mm / inch) NPT	Outlet Size (mm / inch) NPT	Min. Pressure kg/cm <sup>2</sup> PSI (bar g)	Water Flow liters per min	US Gallons per min	
<b>PPE Decontamination Showers</b>															
DEC-V-5	DEC-V-5S	1110	43.70	1300	51.18	2400	94.49	160	352.74	1 1/2"	-	4	56.89	250	66.04
DEC-D-29	DEC-D-29S	1110	43.70	1300	51.18	2400	94.49	150	330.69	1 1/4"	-	4	56.89	250	66.04
-	DEC-V-1	920	36.22	900	35.43	1540	60.63	20	44.09	3/4"	-	2.8	39.83	60	15.85
-	DEC-V-2	920	36.22	900	35.43	1540	60.63	20	44.09	3/4"	-	2.8	39.83	60	15.85
DEC-V-3	-	920	36.22	900	35.43	1540	60.63	20	44.09	3/4"	-	2.8	39.83	60	15.85
<b>Cubicle Showers</b>															
STD-SD-32K		980	38.58	900	35.43	2400	94.49	150	330.69	1"	1 1/2"	2	28.45	77	20.34
STD-SD-31K		980	38.58	900	35.43	2400	94.49	150	330.69	1"	1 1/2"	2	28.45	126	33.29
STD-SD-31K/V		980	38.58	900	35.43	2400	94.49	150	330.69	1"	1 1/2"	2	28.45	126	33.29

# decontamination showers

With the increasing occurrence of chemical spillages and threats involving all types of Hazardous chemicals the International Emergency Services call on the PORTAflex® range of decontamination showers to clean or neutralise their protective suits. These NATO approved showers play their part on reducing the risk from the contaminated concentrate by dilution neutralization or by containment. The PORTAflex® range of products are designed to be robust and rapidly deployed by one man at the site of any incident.

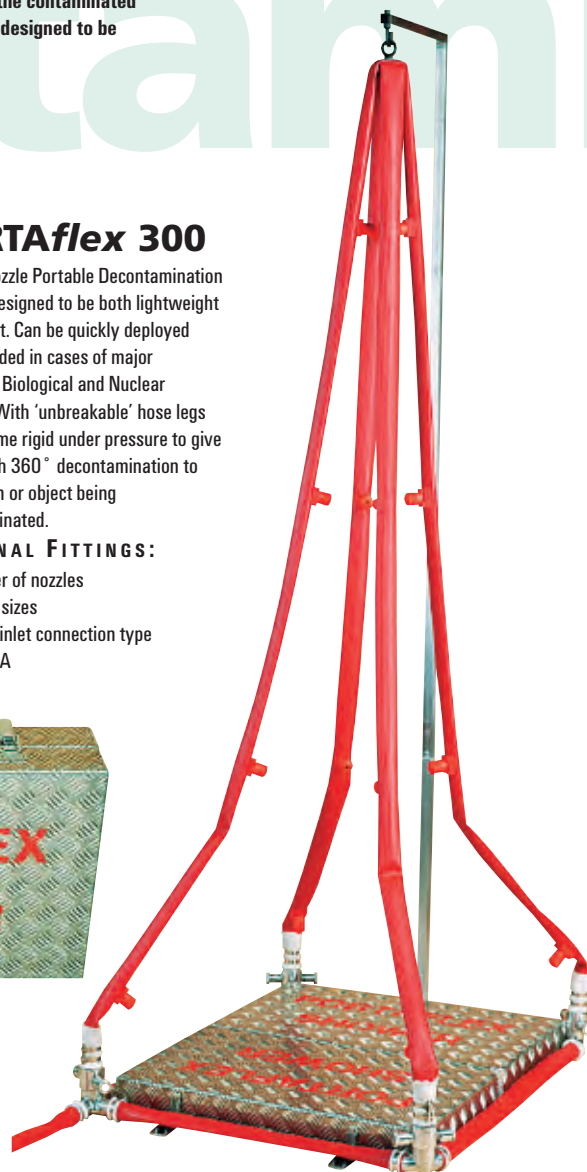


## PORTAflex 300

A multi-nozzle Portable Decontamination Shower designed to be both lightweight and robust. Can be quickly deployed when needed in cases of major Chemical, Biological and Nuclear incident. With 'unbreakable' hose legs that become rigid under pressure to give a thorough 360° decontamination to the person or object being decontaminated.

### OPTIONAL FITTINGS:

- Number of nozzles
- Nozzle sizes
- Water inlet connection type
- CUPOLA



## PORTAflex 75

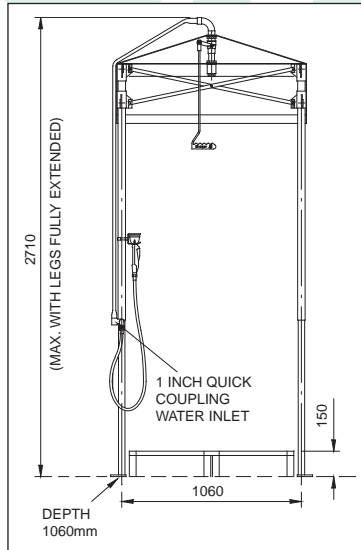
An economically priced unit which in serious accidents serves as a primary or front line safeguard until such time as a major Decontamination Shower is brought to the scene or is made available. Alternatively, this primary unit may be adequate for minor incidents or where the degree of contamination is not great.



# nation

## PORTAdec 1000

A Portable Shower used to decontaminate protective clothing, or as a temporary Emergency Shower to wash chemicals from the skin. Stored in a heavy duty 'hold-all', it can be erected in minutes. The unit comprises a robust foldaway frame with integral hood, disposable side sheeting and sump. The sump incorporates a disposable fibreglass foot grating to ensure the user is not standing in the contaminated wash-off water.



## PORTAflex CUPOLA

An inflatable Decontamination Shelter used in conjunction with the hose assembly from a PORTAflex 300. Used to contain the contaminated water and eliminate airborne overspray. Fitted with replaceable inner lining, which has windows on two opposite sides to enable the decontamination process to be observed while openings on the other two sides enable personnel to walk through from the dirty area to the clean area. The openings are fitted with drop down splash flaps to eliminate overspray.



	Depth		Width		Height		Weight		Inlet Size (mm / inch) NPT	Assembly Time	Water Flow	
	mm	inch	mm	inch	mm	inch	kg	lbs			liters per min	US Gallons per min
<b>Decontamination Showers</b>												
PORTAFLEX 75	1040*	40.94	760*	29.92	160*	6.30	17	37.48	2 1/2"	less than 30 seconds	750	198.13
PORTAFLEX 300	770*	30.31	500*	19.69	190*	7.48	24	52.91	2 1/2"	less than 45 seconds	1750	462.30
PORTAFLEX CUPOLA	900*	35.43	600*	23.62	400*	15.75	45	99.21	2 1/2"	less than 3 minutes	75 to 1750	19.81 to 462.30
PORTADEC 1000	1700*	36.22	500*	35.43	300*	60.63	35	44.09	1"	less than 7 minutes	15 to 30	3.96 to 7.93

\*packed size

# HUGHES



**HUGHES-SAFETY.COM**

#### **Hughes North America**

765 Evett Street Sarnia Ontario N7T 7L1 Canada  
Toll Free Tel: (1) 866-312-1652 Toll Free Fax: (1) 866-795-0368  
Tel: (1) 519-336-4416 Fax: (1) 519-336-7281  
Email: [info@hughes-safety.com](mailto:info@hughes-safety.com)  
Web: [www.hughes-north-america.com](http://www.hughes-north-america.com)

#### **Hughes Safety Showers Ltd**

Whitefield Road Bredbury Stockport Cheshire SK6 2SS England  
Tel: +44 (0)161 430 6618 Fax: +44 (0)161 430 7928  
Email: [info@hughes-safety-showers.co.uk](mailto:info@hughes-safety-showers.co.uk)  
Web: [www.hughes-safety-showers.co.uk](http://www.hughes-safety-showers.co.uk)

#### **Hughes Middle East**

Sector Q3 : Unit 177 PO Box : 120448  
Sharjah Airport International Free Zone - SAIF Zone  
Sharjah United Arab Emirates  
Tel: +971 (6) 5579011 Fax: +971 (6) 5579022  
Email: [hughesme@emirates.net.ae](mailto:hughesme@emirates.net.ae)  
Web: [www.hughes-middle-east.com](http://www.hughes-middle-east.com)

#### **Hughes Notduschen GmbH**

Lagesche Str. 15c D-32657 Lemgo Germany  
Telefon: +49 (0)5261/934280 Telefax: +49 (0)5261/934760  
Email: [info@hughes-notduschen.de](mailto:info@hughes-notduschen.de)  
Web: [www.hughes-notduschen.de](http://www.hughes-notduschen.de)

#### **Hughes Douches de Sécurité**

Samoni Services sprl  
Avenue de Maire 133 bis B-7500 Tournai Belgium  
**Belgique** **France**  
Tél: +32 (0)474 99 48 29 Tél: +32 (0)474 99 48 29  
Fax: +32 (0)69 30 10 11 Fax: + 33 (0)1 77 62 47 16  
Email: [info@samoni.be](mailto:info@samoni.be) Email: [hughesfrance@gmail.com](mailto:hughesfrance@gmail.com)  
Web: [www.douchedesecurite.com](http://www.douchedesecurite.com)